

# *scolia* *home 2*

WITH LIGHT RING

## **USER MANUAL**



[www.scoliadarts.com](http://www.scoliadarts.com)



# HARDWARE LIST



Processing unit  
with WiFi dongle



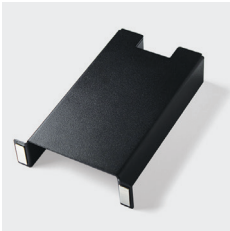
Camera holding  
legs 3x



Light ring



Cover plate



Large metal bracket



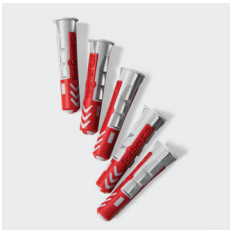
Small metal bracket



Power supply



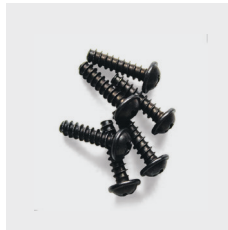
LAN cable



Wall plugs 5x



Long black screws  
5x



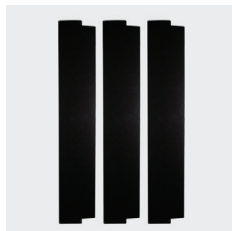
Small black screws  
6x



Cable clips 3x



Template



Side covers 3x



### **NOT INCLUDED COMPONENTS**

This package **does not contain a dartboard surround** and a **dartboard**, which are essential parts of a complete auto-scoring system.



### **IMPORTANT!**

**Do not expose the product to direct sunlight or hot surface!**

**Do not operate the product for more than 12 hours per day!**

**Do not connect any power supplies to the processing unit other than the one in the packaging!**

**In the unlikely event of the product causing harmful interference in domestic products, users are required to correct the interference at their own expense.**

# FREQUENTLY ASKED QUESTIONS

## **What are the requirements of setting up Scolia Home 2?**

Apart from a standard steel-tip dartboard, you will need a **75 by 85 cm** flat surface around your dartboard on a solid wall (preferably brick or concrete) and a **minimum ceiling height of 215 cm**.

While wired Internet access is not necessary, it is recommended for best performance.

## **Do I need special dartboard or special darts set to use it?**

No, you can use your regular dartboard and darts set with Scolia. Scolia Home 2 is compatible with the products of all the major dartboard manufacturers, including the **Winmau Blade 6 Triple Core** and the **Unicorn Eclipse Pro** dartboards. Special number rings (such as the one for Target Aspar) are not supported. Note that the image processing algorithm expects the dartboard to have standard dimensions. It is recommended to avoid using dark-coloured barrels, shafts and flights for better accuracy.

## **Can I use Scolia Home 2 in a non-residential environment?**

Yes, Scolia Home 2 is designed to satisfy the demands of various environments, such as offices, darts clubs and darts bars. The robust yet elegant design ensures reliable performance and durability in all circumstances. Once the system is installed, there is no need for any manual adjustment or calibration during everyday use.

## **Is wired Internet connection necessary?**

Scolia Home 2 supports native WiFi connection, but bear in mind that the performance of the system is heavily affected by the quality of your WiFi network. For best performance, we recommend using a LAN cable to connect your Scolia unit directly to your router, as it offers the most stable connection.

You can use wireless internet connection for your client device. However, depending on the quality of your wireless access network, you can experience large variance in response times. Therefore, if latency is crucial for you, we


recommend using wired connection for the client device for the best user experience. For instance, you can open the Scolia web application on your PC and redirect its screen to a monitor/TV near the dartboard. You can also mirror the screen of your tablet or smartphone to a TV - check the options available for your Android or iOS device.

### **Do Scolia Home 2 owners access the same software functionalities as Home and Pro owners?**

Yes, all Scolia users have access to the same Scolia application features at [game.scoliadarts.com](https://game.scoliadarts.com), including regular software updates.

#### **TIPS FOR HIGHER ACCURACY**

- Mount the Scolia system on a solid wall (preferably brick or concrete).
- **Mount the side covers included in the box in order to block external light sources and movement.**
- Avoid using dark-coloured barrels, shafts and flights.
- Sharpen your darts regularly to minimize the number of bounce-out throws.
- Stabilize your dartboard using wedges or other equipment.
- Do not use flash photography and do not block the field of view of the cameras.

** For more frequently asked questions, visit [scoliadarts.com/faq](https://game.scoliadarts.com/faq)**

# ASSEMBLING YOUR UNIT

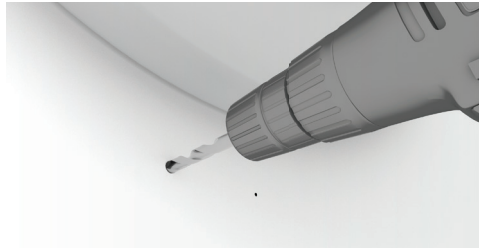
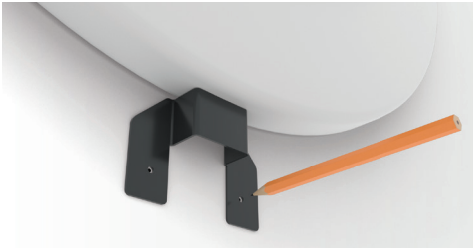


VIDEO GUIDE

[scoliadarts.com/home2a](https://scoliadarts.com/home2a)

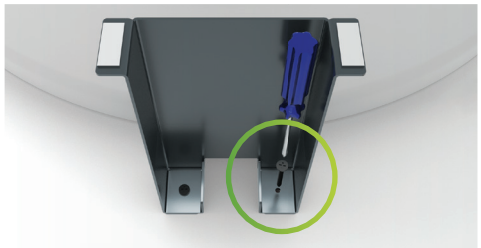
## STEP 1

Mark two holes on the wall by aligning the **small metal bracket** to the **dartboard surround**. Drill the **two holes**.



## STEP 2

Insert **two wall plugs** into the holes and mount the **metal brackets** using a PH screwdriver and **two black screws**.



## STEP 3

Take down your **dartboard surround** and your **dartboard**. Mark the position of the three holes for the camera legs using the **template**.



**STEP 4**

Drill three holes, insert the **wall plugs** into the holes.



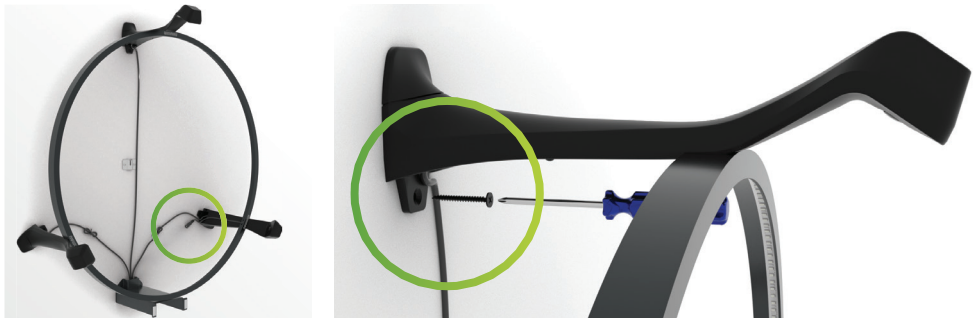
**STEP 5**

Mount the **camera legs** to the **light ring** using two **small screws** per leg. Make sure the screws are tightened properly.



**STEP 6**

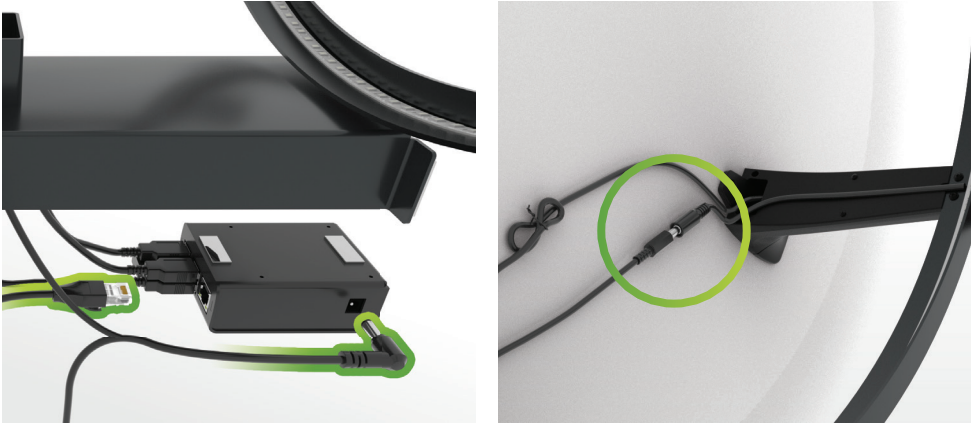
Having the LED light cable on the bottom right hand side, mount the **light ring** with the **camera legs** to the wall using one **large screw** per leg.





**STEP 7**

Plug in the **USB cables**, the **LAN cable** and the **power supply** to the **processing unit**. Connect the **power supply** to the **LED light** as well.



**STEP 8**

Attach the **processing unit** and the cover plate to the **metal bracket** using the magnets on the processing unit and on the metal bracket.



**STEP 9**

Place back the **dartboard** and the **dartboard surround** on the wall.



**STEP 10**

Turn on the **unit** and **enjoy!**



**OPTIONAL STEP**

Attach the **side covers** to the **legs** one by one, using four **screws** per side cover.



# SETTING UP THE SYSTEM

## BOARD REGISTRATION

Register your board at [game.scoliadarts.com](https://game.scoliadarts.com).

### STEP 1

Create an account or use your Google account to make the registration process even simpler.

### STEP 2

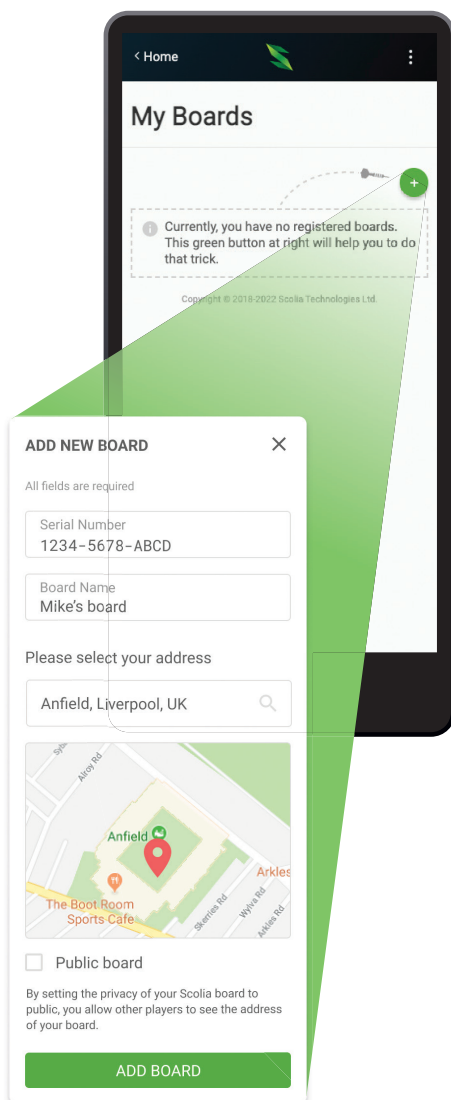
Once logged in, go to the **My Boards** page and click the **Add new board** button. Enter the following **serial number**:

### STEP 3

Add board information. Name your board and enter the town/city where you use it.

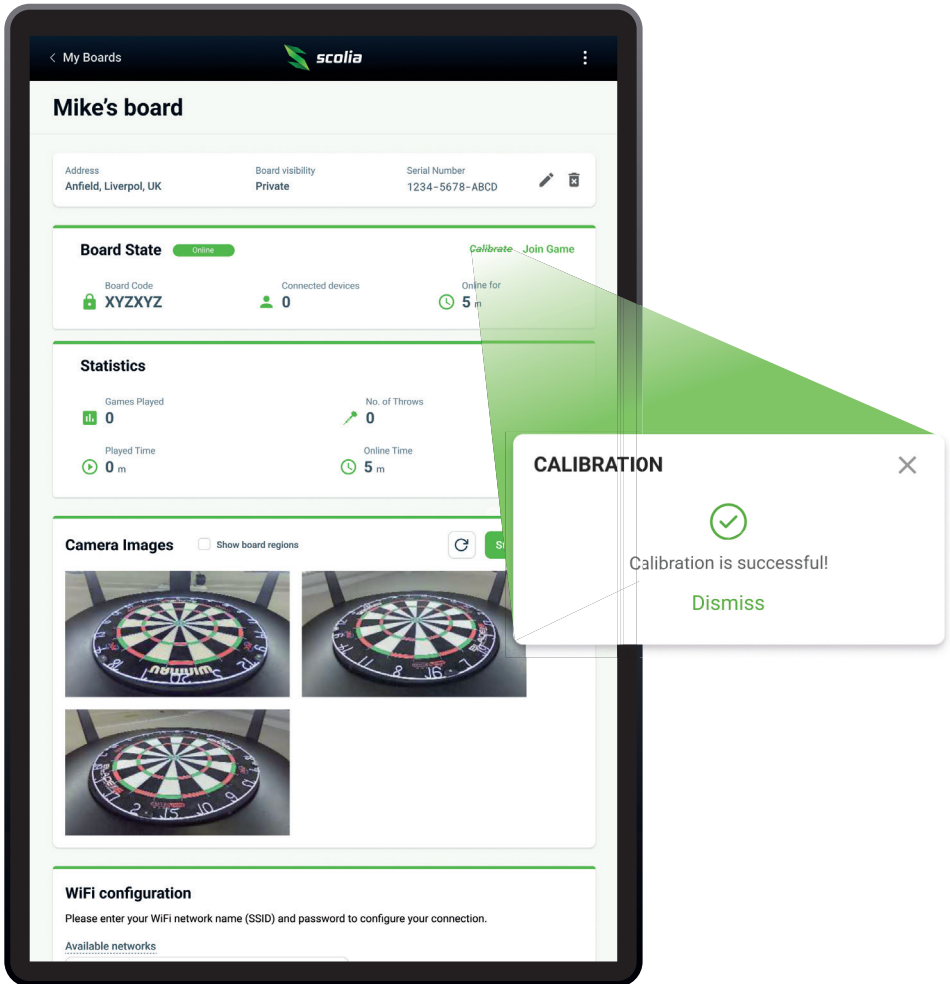
### STEP 4

Finalise the process by clicking on the **Add board** button.



# BOARD CALIBRATION

On the **My Boards** page, go to the **Board State** section. Make sure your board is online. Click the **Calibrate** link and wait for the system to calibrate itself. Once the system is calibrated, your system is ready to play!



# WIRELESS CONNECTION SETUP

The WiFi dongle provides wireless connection to Scolia Home 2. The WiFi signal in the room must be stable and strong for smooth performance.

### STEP 1

Make sure your Scolia board is connected to your router with a **direct cable connection**. Turn on your unit.



### STEP 2

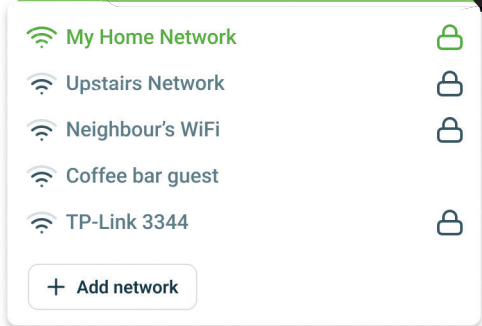
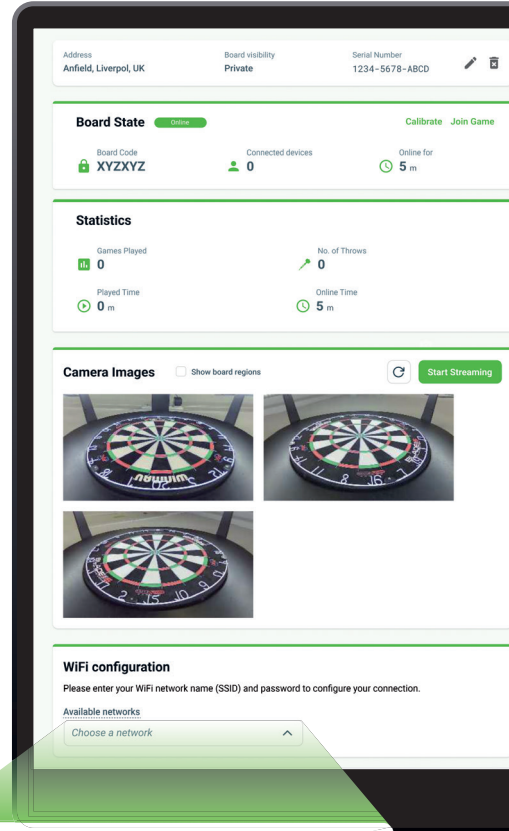
Once your Scolia is online, scroll down to the **WiFi Configuration** section.

### STEP 3

Search for your WiFi network, enter its password to the input field and click **Join**.

### STEP 4

Wait for the Scolia board to connect to your WiFi network. Once it is connected, you can unplug the LAN cable from your unit.



# TROUBLESHOOTING

## My board does not seem to be online. What should I do?

If your processing unit is connected via WiFi, switch to a direct LAN cable connection. Check the red and blue LED lights on the processing unit. The red light should be on, while the blue light should be blinking if your unit is operational.



## The status of the board is CAMERA ERROR. What should I do?

Check the USB cables of the cameras, and make sure they are properly connected to the processing unit. Restart the system by turning it off and on again after a few seconds.

## The status of the board is CALIBRATION ERROR. What should I do?

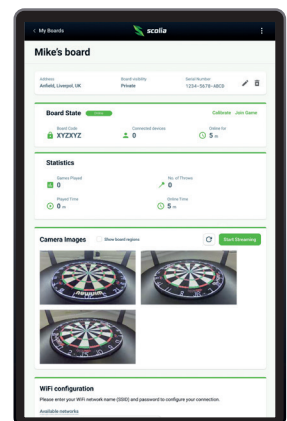
The area around the dartboard must be clear during start-up. The automatic calibration process will fail if one or more objects partially or fully cover the segments of the dartboard. Remove any objects that could block the cameras' view, then restart the system. The owner of the Scolia system can monitor the camera images on the **My Boards** page of the web application.

## The system makes too many mistakes. What should I do?

Try to recalibrate your system by pressing the **Calibrate** link on the **My Boards** page or turn your device off and on again after a few seconds. Make sure the area around the dartboard is clear during the calibration process. **For further accuracy tips see page 6.**

## How can I check the images of the cameras?

Go to your **My Boards** page. If your Scolia system is online, you can see the still images from the cameras. You can refresh the images at any time by pressing the **Refresh** icon or the **Start Streaming** button.







 **ASSEMBLY VIDEO GUIDE**

[scoliadarts.com/home2a](https://scoliadarts.com/home2a)

## NEED HELP?

 [scoliadarts.com/faq](https://scoliadarts.com/faq)

 [support@scoliadarts.com](mailto:support@scoliadarts.com)


## JOIN OUR COMMUNITY

 [facebook.com/groups/scolia](https://facebook.com/groups/scolia)

## FOLLOW US

 [facebook.com/scoliatech](https://facebook.com/scoliatech)

 [instagram.com/scoliatech](https://instagram.com/scoliatech)

 [www.scoliadarts.com](https://www.scoliadarts.com)